

## PentaGuide Test 2: CBCT Report

### OVERALL RESULTS



ALL TOLERANCES PASSING



ANALYSIS COMPLETE

**CT File Name:** C:\RIT\RIT113V4\Demo Images\Radia Demo Images\Pentaguide\Clarkston CT\CT.1.2.840.113619.2.55.3.302650752.159.1486990672.280.33.dcm

**CBCT File Name:** C:\RIT\RIT113V4\Demo Images\Radia Demo Images\Pentaguide\Clarkston CBCT\CT.1.2.246.352.63.1.4725564940925684767.3407605807933568411.dcm

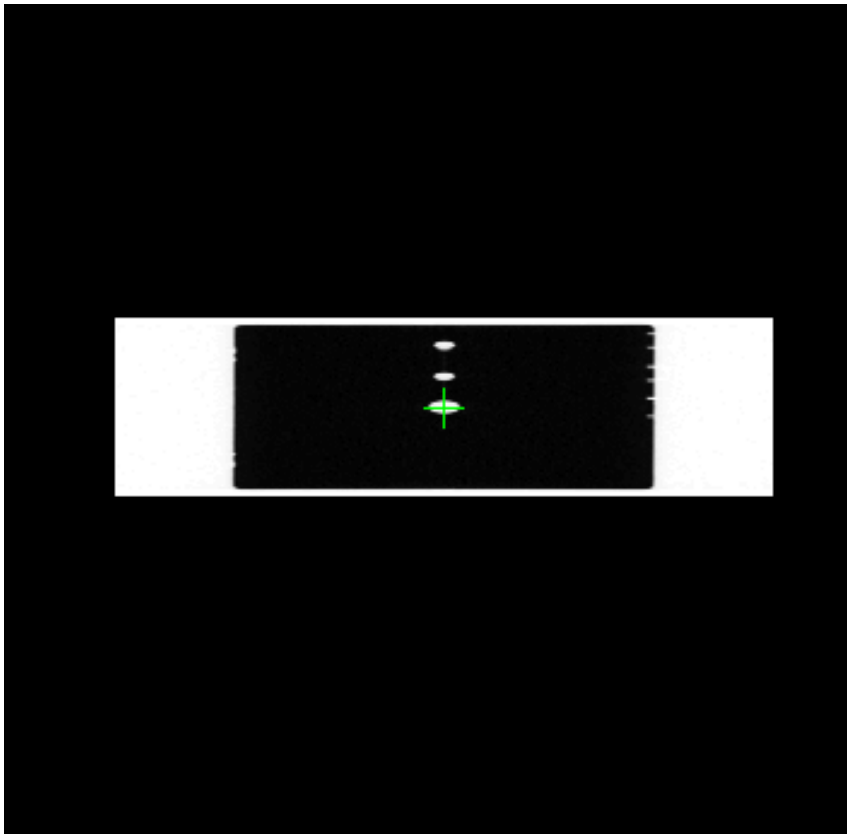
### Image Information

Field	CT Image	CBCT Image
InstitutionName	McLaren Cancer Center	McLaren-Clarkston
StationName	rtct	21EX
ImageType	ORIGINAL\PRIMARY\AXIAL	ORIGINAL\PRIMARY\AXIAL
SliceThickness	1.25	1
DistanceSourceToDetector	1062.55	1501.1522
DistanceSourceToPatient	605.945	0
TableTopLongitudinalPosition		945
TableTopLateralPosition		-8

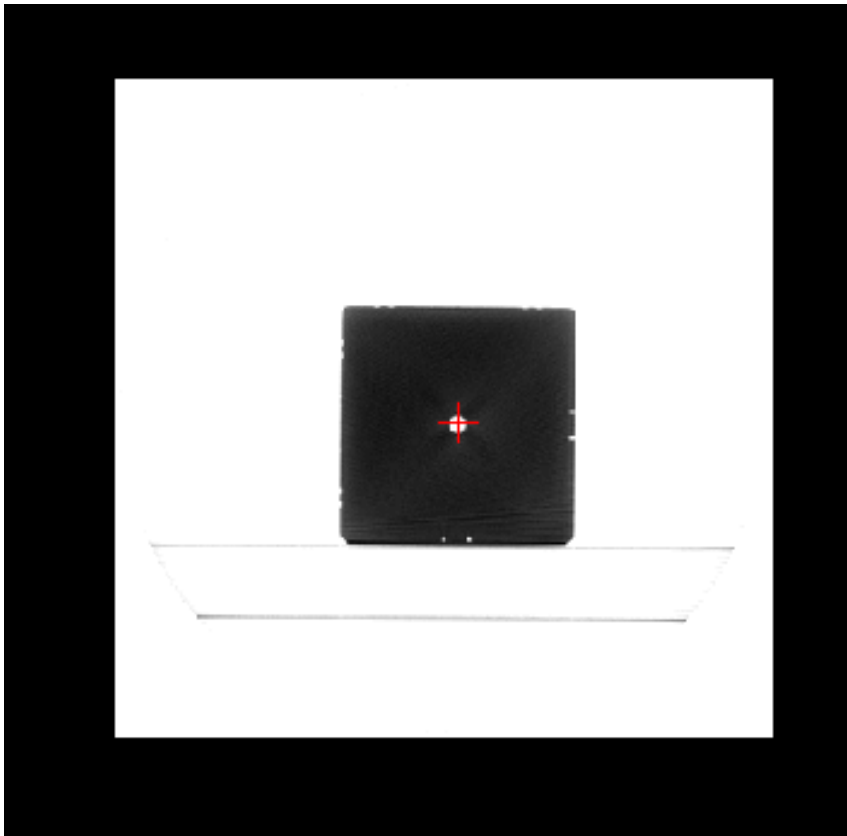
### CT Axial Image



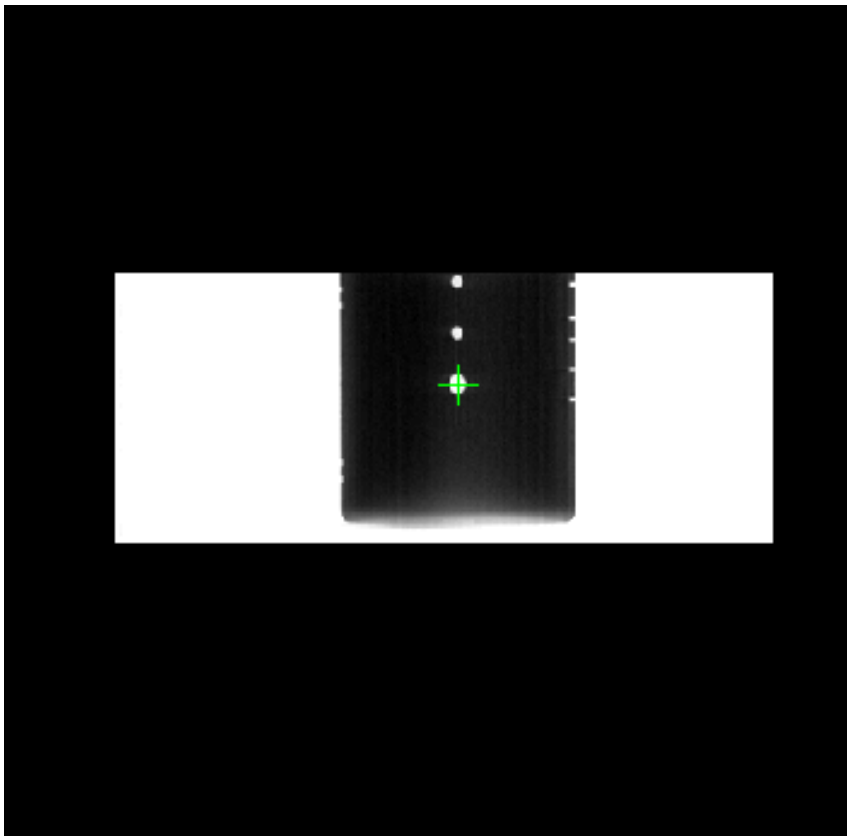
### CT Sagittal Image



### CBCT Axial Image



### CBCT Sagittal Image



## PentaGuide Center Locations

	<b>X (mm)</b>	<b>Y (mm)</b>	<b>Z (mm)</b>
CT Position	0.34	0.01	-0.66
CBCT Position	6.64	7.90	8.99
Position Difference	-6.30	-7.90	-9.65
Pass/Fail*	Pass	Pass	Pass

\*X-Position Difference tolerance: -6 +/- 1 (mm)

\*Y-Position Difference tolerance: -8 +/- 1 (mm)

\*Z-Position Difference tolerance: -10 +/- 1 (mm)

## Analysis Settings

CT Axial Offset	0
CT Sagittal Offset	0
CT Exposure Method	0
CT Invert Image	1
CT Image Threshold	0.65
CBCT Axial Offset	-16
CBCT Sagittal Offset	9
CBCT Exposure Method	0
CBCT Invert Image	1
CBCT Image Threshold	0.5
CBCT Sagittal Threshold	0.8
CT ROI	22