

PentaGuide Test 1: DRR-kV-MV Coincidence Report

OVERALL RESULTS



ONE OR MORE TOLERANCE(S) FAILING



ANALYSIS COMPLETE

DRR File Name: C:\RIT\RIT113V4\Demo Images\Radia Demo Images\Pentaguide\Clarkston AP DRR
RI.1.2.246.352.71.3.516677321661.8833140.20170213143302.dcm

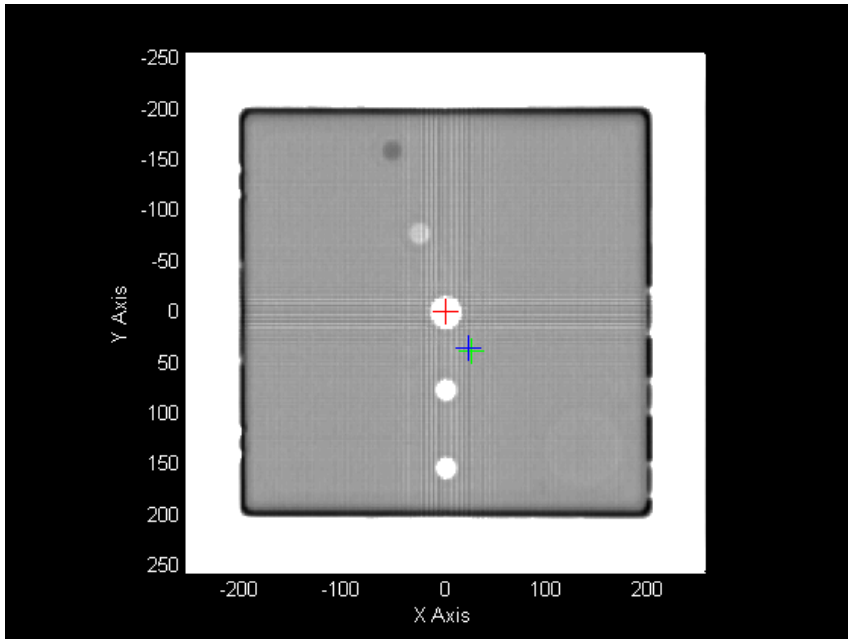
MV File Name: C:\RIT\RIT113V4\Demo Images\Radia Demo Images\Pentaguide\Clarkston AP MV
RI.1.2.246.352.81.3.1509105730.20026.19509.191.142.dcm

KV File Name: C:\RIT\RIT113V4\Demo Images\Radia Demo Images\Pentaguide\Clarkston AP kV
RI.1.2.246.352.61.3.5524671825992967047.6591302139899687837.dcm

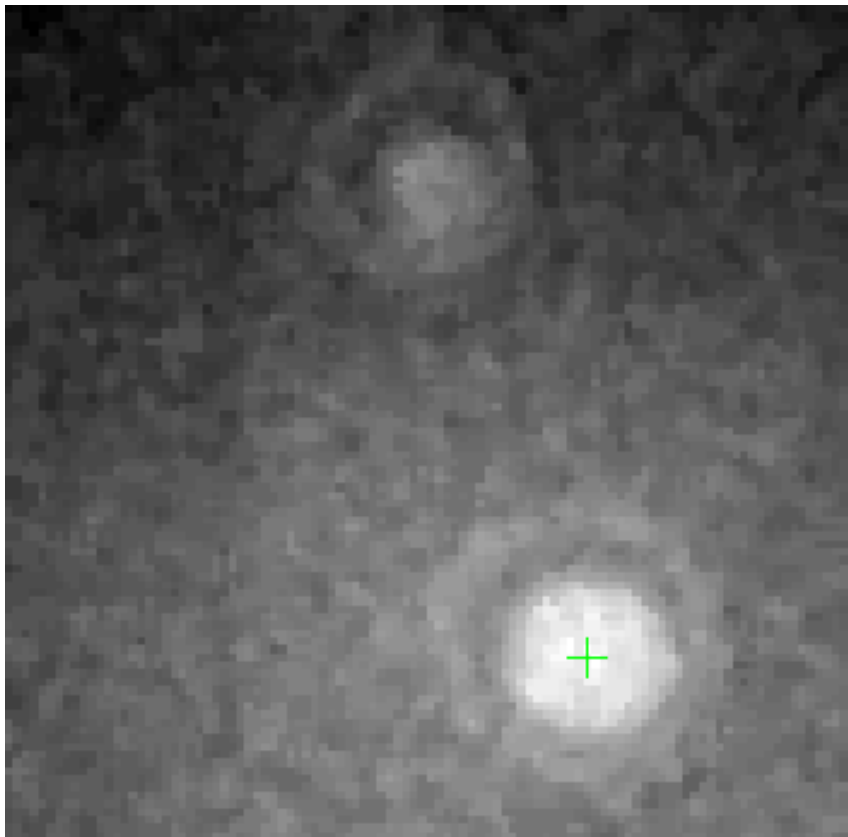
Image Information

Field	DRR Image	MV Image	kV Image
Institution		McLaren-Clarkston	McLaren-Clarkston
Station	mhc-msdbaria01	21EX	21EX
Image Type	DERIVED\SECONDARY\DRR	ORIGINAL\PRIM...\PORTAL	ORIGINAL\PRIMARY...\OBI
RT Image Position	-99.8047 99.8047	-200.312 150.136	-198.462 148.798
RT Image SID	1000	1500	1499.75
Radiation Machine SAD	1000	1000	999.75
SOP Instance UID	1.2.246.352.71.3.51667732 1661.8833140.20- 17021314 3302	1.2.246.352.81.3.15091057 30.20026.195- 09.191.142	1.2.246.352.61.3.55246718 25992967047.6591302139899 687837
Gantry Angle	Right Lat	Right Lat	Right Lat

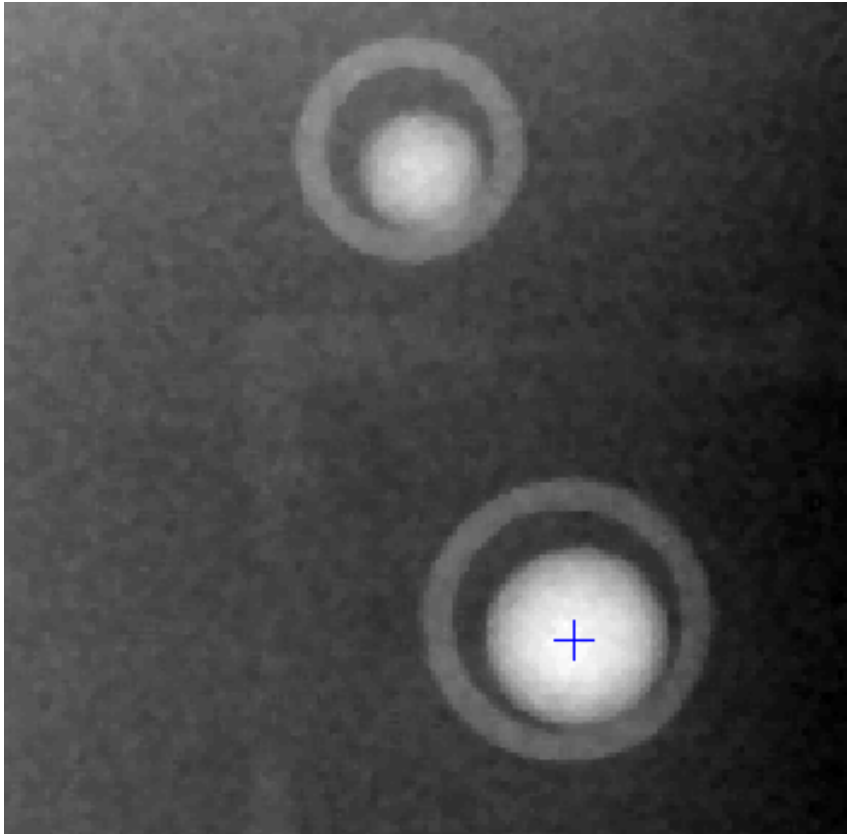
DRR Image



MV Image



kV Image



PentaGuide Distance from DRR Centers

	X(mm)	Y(mm)	Distance(mm)	Pass/Fail*
MV Offset	9.74	-15.04	17.92	Pass
kV Offset	8.84	-14.02	16.58	Fail

*MV Distance tolerance: 18 +/- 1 (mm)

*kV Distance tolerance: 18 +/- 1 (mm)

Analysis Settings

Initial DRR Threshold	0.5
Initial MV Threshold	0.65
Initial kV Threshold	0.65
Invert DRR Image	1
Invert MV Image	1
Invert kV Image	1
DRR Image ROI	16
MV Image ROI	40
kV Image ROI	40