

IsoCube Test 1: kV-MV Coincidence Report

OVERALL RESULTS

 ALERT	
ONE OR MORE TOLERANCE(S) FAILING	ANALYSIS COMPLETE

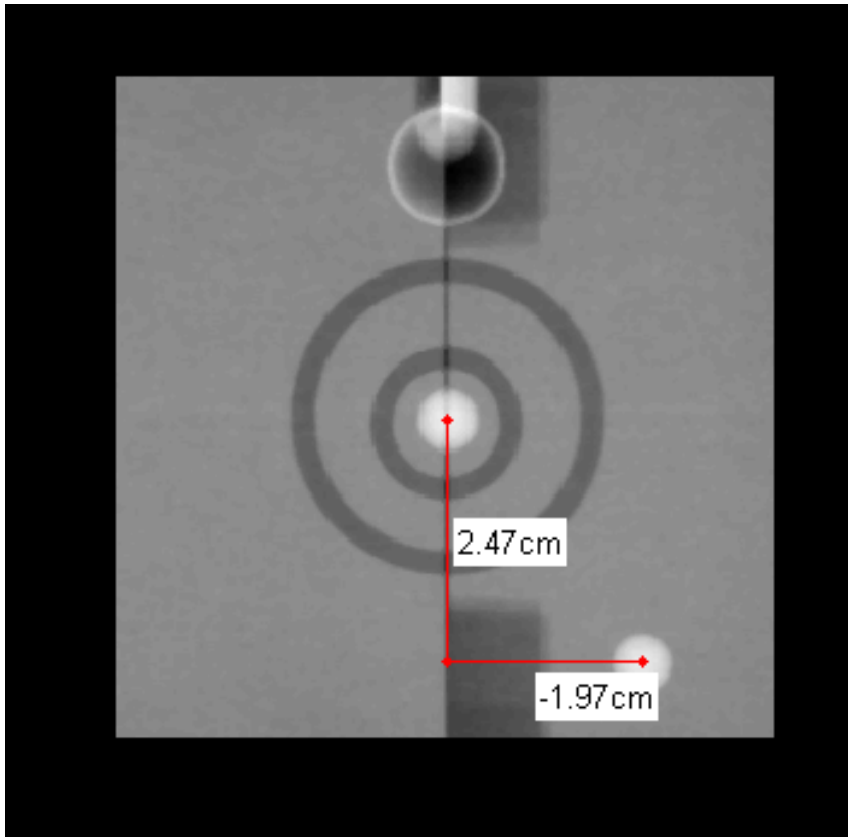
MV Filename: C:\RIT\RIT113V4\Demo Images\Radia Demo Images\IsoCube\Test1_kV_Rt_Lat.dcm

KV Filename: C:\RIT\RIT113V4\Demo Images\Radia Demo Images\IsoCube\Test1_MV_AP.dcm

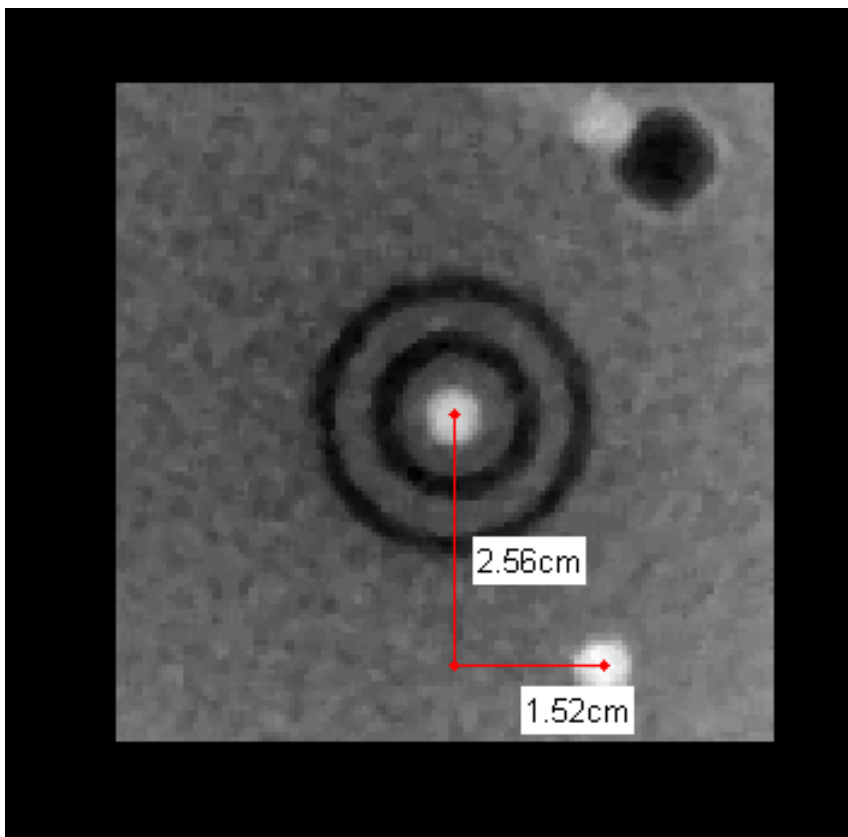
Image Information

Field	MV Image	kV Image
Institution		
Station		
Image Type	DERIVED\\SECONDARY\\PORTAL	DERIVED\\SECONDARY\\PORTAL
RT Image Position	-198.656 148.992	-200.704 150.528
RT Image SID	1500	1500
Radiation Machine SAD	1000	1000
SOP Instance UID	1.3.6.1.4.1.9590.100.1.2.273714915111705-379011169844893896041635	1.3.6.1.4.1.9590.100.1.2.265679148213-588835541477021462967002373
Gantry Angle	AP	Right Lat

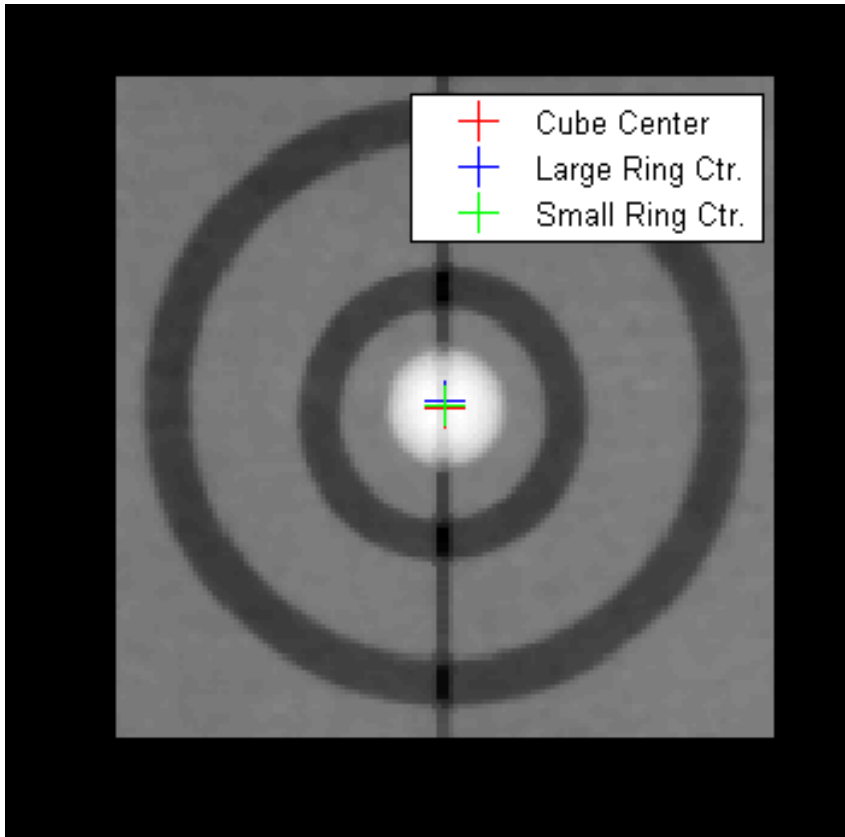
MV Image



kV Image



MV Image Ring Detail



kV Image Ring Detail

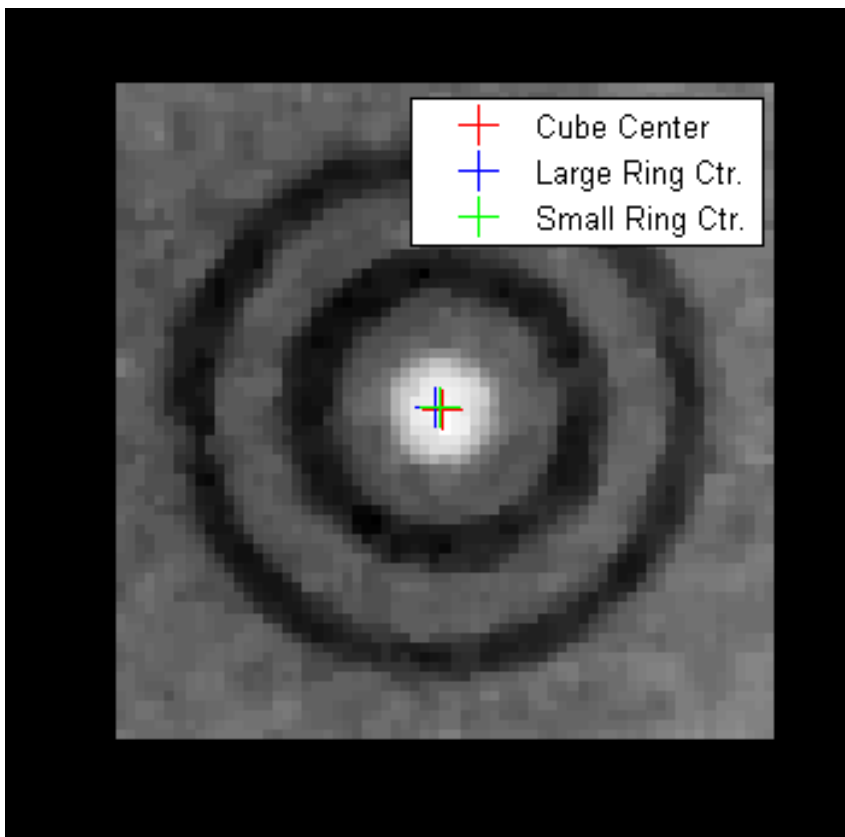


Image SID (Magnification)

	Measured (mm)	Reported (mm)	Difference (mm)	Pass/Fail*
MV Image	464.2	1500.0	1035.8	Fail
kV Image	1330.4	1500.0	169.6	Fail

*Difference tolerance: 0 +/- 35 (mm)

Isocube Center Location

	X(mm)	Y(mm)
MV Image	0.52	-1.98
kV Image	1.46	-0.65
Offset	-0.94	-1.33
Pass/Fail*	Pass	Pass

*Offset tolerance: 0 +/- 2 (mm)

IsoCube Center to Offset Object Measurements

Distance	Measured (cm)	Expected (cm)	Diff. (Measure - Expected) (mm)	Pass/Fail*
MV Longitude	2.47	2.50	-0.35	Pass
MV Lateral	-1.97	-1.50	-4.68	Fail
kV Vertical	1.52	2.00	-4.77	Fail
kV Longitude	2.56	2.50	0.55	Pass

*Difference tolerance: 0 +/- 2 (mm)

Ring Centroids

Ring	Offset X(mm)	Pass/Fail* (Offset X)	Offset Y(mm)	Pass/Fail* (Offset Y)
MV-Large Ring	0.04	Pass	0.48	Pass
MV-Small Ring	0.08	Pass	0.03	Pass
kV-Large Ring	0.60	Pass	0.23	Pass
kV-Small Ring	0.07	Pass	0.18	Pass

*Ring offset tolerance: 0 +/- 1 (mm)

Analysis Settings

Initial MV Threshold	0.5
Initial kV Threshold	0.1
Invert MV Image	0
Invert kV Image	0